

# WCRC Newsletter

Spring 2010  
Distributed March 8, 2010

Will  
County  
Reading Council

Reading Will give you a step up.

## Contents

Spring Event:  
Pizza Party with  
Family Literacy  
Speaker

Professional Book  
Review

Meet your Board  
Members

Strategy: Go for the  
Gold

Event update

Awards!!!

Scholarships!!!

## Will County Reading Council

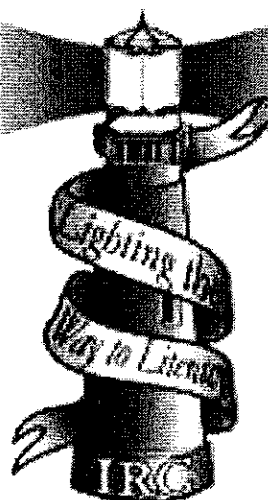
### Board of Directors

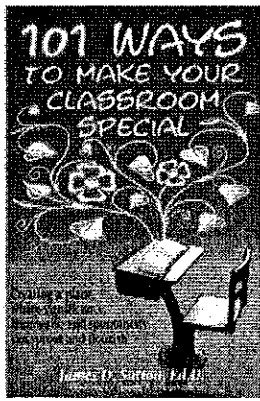
### 2009-2010 Officers

President:	Amy O'Brien amyfuerst@hotmail.com
President-Elect:	Deborah Augsburger augsbude@lewisu.edu
Vice-President:	Perhaps you?
Treasurer:	Kristen Wooten kkaufhold1@yahoo.com
Secretary:	Joyce Eddy jedagreen@att.net
Membership:	Boomer Crotty 608Boomer@sbcglobal.net;
Historian:	Darin Krol krold@365u.will.k12.il.us
Awards:	Christy Ziller cziller@wilmington.will.k12.il.us
Past President:	Joyce Hayward haywarjo@lewisu.edu

## Mark Your Calendars!

- ◆ March 18-20—Illinois Reading Council Conference—  
Lighting the Way to Literacy
- ◆ March 26—Deadline for Awards Nominations and  
Scholarship/Grant Applications
- ◆ April 20—Family Literacy focus at the Spring Pizza  
Party and Annual Meeting Event at Lewis University  
campus in Tinley Park
- ◆ April 25-28—IRA Annual Convention in Chicago
- ◆ July 7-9—IRC Leadership Retreat at Grand Bear Lodge  
near Starved Rock





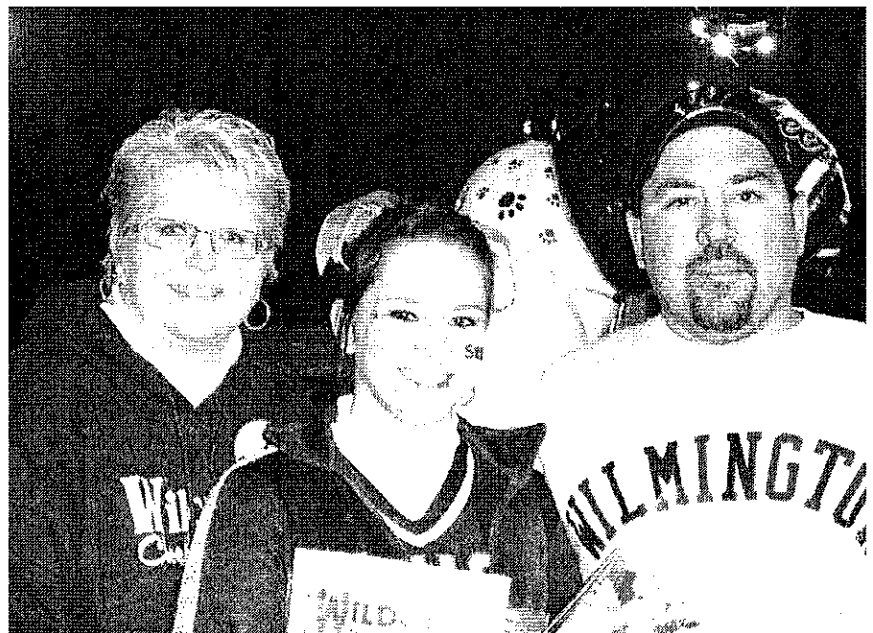
*101 Ways to Make Your Classroom Special*  
by James D. Sutton, Ed. D.

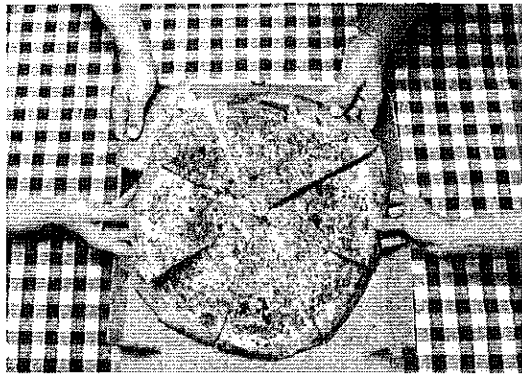
This book would make a great gift for any new teacher or graduating education major. It is set up by chapters but really based on the needs of the classroom situations you may currently be in. This book offers great suggestions on how to create the best student friendly environments. These ideas have been tried and tested by the author and his colleagues. There are activities to do with your students, ideas for home communication, incentive ideas, classroom management tools, and thoughts about community outreach projects. I tried idea #4: leaving a special note on a desk for a student. This worked out great. I even had a parent comment on it at a student conference. It made the student happy to receive it; the parents pleased to finally get a good note from a teacher about their challenging youngster; and the assistant principal was thrilled to hear this praise about my efforts to make positive home communications. It was a win-win situation.

I like the way the book reads and is very teacher friendly. I would recommend this to any teacher who wants to jump start a new year or revitalize one. It sells for under \$10.00 and could really make a difference in your classroom.

Meet your Board Members! We'll profile a board member here each issue.

Mrs. Christy Ziller, Awards Chair, is a 7<sup>th</sup> grade teacher at Wilmington Middle School. She earned her Masters of Science Degree in Reading with a Reading Specialist Endorsement and B.A. in Elementary Education from the University of St. Francis. She has been a Language Arts teacher for 7 years and has been employed by the Wilmington School District for a total of 12 years. Besides teaching English and reading, Mrs. Ziller is the National Jr. Beta Club Sponsor, middle school cheerleading coach, and hosts a morning book club. Christy is a member of the Kappa Delta Pi Educational Honor Society, Will County Reading Council, Secondary Reading League, Illinois Reading Council, and the International Reading Association. She has been married to Thomas Ziller for 19 years, and they have one daughter, Shelby who is a senior at Wilmington High School. Christy enjoys traveling, photography, scrapbooking, and attending Nascar events.





Be our guest at the Spring  
**PIZZA PARTY & annual meeting**  
with special guest  
*Susan Sokolinski*

*Victory Adult Family Literacy Program*  
(VALFP)

*A Family Literacy Model for Supporting Refugee Families with Acquisition of the American Language,*

**Tuesday evening, April 20, 2010**

6:00 – 8:00 p.m.

Lewis University Tinley Park Campus

Located at the crossroads of Interstate 80 and Harlem Ave. (Route 43)

**Come for the Pizza Party & annual meeting, stay for an  
inspiring keynote speaker.**

*No Admission Fee! RSVP for dinner count to Deb Augsburger by April 10.*

The influx of families who seek refuge in U.S. communities from violence and persecution in their own countries has a profound effect on local education and social service agencies. According to the U.S. Department of Health and Human Services (2008) the number of documented refugee arrivals in the U.S. increased from 41,053 in 2006 to 48,281 in 2007. The impact of refugee families on public school systems is staggering. Educators struggle to teach classrooms of young children who may speak as many as five or more languages. Understaffed social service agencies struggle to teach families how to access medical aid, transportation services, and employment assistance. Refugee families often struggle with adaptation to unfamiliar social practices and local languages. Cultural disparities may pose barriers to effective home school collaboration.

Susan Sokolinski presents Victory Adult & Family Literacy Program as a family literacy model that promotes collaboration among schools and other local agents that strive to support refugee families. VALFP is a nonprofit volunteer-based family literacy program situated in a large diverse Midwestern city. The center is on the site of an apartment complex where a large number of refugee families reside. The families originate from a wide variety of countries including, Afghanistan, Burma, Iraq, Russia, Turkey, Vietnam, and the Sudan. Victory has recently entered into a collaborative relationship with the local World Relief agency to promote the enculturation and English literacy development of local residents.

## Will County Reading Council Awards

The **WCRC Reading Scholarship** is granted to a member pursuing a graduate degree in reading. These candidates have demonstrated dedication to the profession through continuing professional development. The recipient will receive two hundred and fifty dollars and recognition of this honor at the spring event.

The **WCRC Local Literacy Award** is bestowed upon an individual who has made a significant contribution to literacy at any level, regardless of membership. This award is not limited to professional educators nor is it limited to a certain level of education. The candidates must merely have given their time and effort to assist others towards literacy.

The **WCRC Literacy Educator of the Year** is awarded to a teacher who has made inroads into the education of children. These candidates have helped others on a path to lifelong learning. They have inspired their students to become readers and have served as models for other teachers.

Please use this form to nominate yourself or others for one of the three awards described above. Please send your nominations by **Friday, March 26** to

Christy Ziller, 403 Central, Wilmington, IL 60481 [cziller@wilmington.will.k12.il.us](mailto:cziller@wilmington.will.k12.il.us)

**I would like to nominate:**

---

**Name**

---

**Street**

---

**City, State, ZIP**

**Phone number & email:** \_\_\_\_\_

**For the following award:**

\_\_\_\_\_ **Reading Scholarship**

\_\_\_\_\_ **Literacy Educator of the Year**

\_\_\_\_\_ **Local Literacy Award**

**Reason (or submit a separate letter):**

---

---

---

---

---

---

---

---

**My name and contact information:**

---

**Name**

---

**Address, phone, email**

## Strategy Exchange



### Go for the Gold! Submitted by Joyce Eddy

**Go for the Gold** - the perfect activity for the Winter Olympics and for students learning new vocabulary!

Choosing a literature selection or content information, the teacher provides students with a list of vocabulary words - between 10 and 20 depending on the age/ability of students. Some words will be new while others represent essential information, such as names, dates, significant verbs and the like. Each term should be written in a grid made by the teacher so that students can cut out the squares with words and manipulate the squares throughout the activity. The teacher demonstrates almost every step before asking

students, in partners, to perform the same activity.

**Step one:** the teacher helps students pronounce and identify the meanings of any unknown words. The title, a picture, or diagrams, maps, etc. might be shared with the students at this time.

**Step two:** the teacher models choosing any two words and using them in a sentence that makes sense. Using one set of word squares, the teacher asks partners to do the same with each partner picking up two different word squares to construct a sentence. The teacher may call on a few students to share aloud, asking if the sentence seems as though it would appear in the upcoming selection.

**Step three:** the teacher models choosing three words, combining them into a sentence before asking students to do the same thing. (The words used in step two may be repeated or they may be set aside and different words used; this depends on the ability of the students and the number of words available to use.) Sharing aloud may occur once more for the purpose of identifying the likelihood of it's appearing in the selection.

**Step four:** the teacher may ask students to use four words in a sentence or s/he may go straight to:


**Step five:** **Go for the Gold!** This time the teacher does not model, but asks the partners to work together to create a cohesive set of sentences using as many of the words as possible. The sentences may be written down or may be spoken orally.

**Step six:** the selection is read and students return to the vocabulary words. Now students should be able to construct a summary or overview of the passage using all of the vocabulary words. This activity may be done in partners or individually.

### Event Update: Winter Professional Development Round Table

Local educators and pre-service education majors had the opportunity to choose among six professional development presentations to build their knowledge of current literacy practices. On Thursday, February 18<sup>th</sup>, Will County Reading Council held a Winter Professional Development Round Table at Lewis University's D'Arcy Center at the main campus in Romeoville, Illinois. Area educators, including Melissa Carlson from Ridge Elementary School, Kristen Wooten from Mokena Elementary, Lori Czaplá from Minooka Community High School, Liz Perillo from Andrew High School, Mary Kloss from Parker Junior High and Professor Linda Whitaker from Lewis University, were presenters. Attendees had the opportunity to choose among sessions on writing, cooperative learning structures, vocabulary, content area reading, and meeting the literacy needs of boys. About twenty-five individuals shared in the event, which included refreshments.





## Will County Reading Council

Reading Will give you a step up.

### Will County Reading Council

Will County Reading Council is committed to:  
promoting the value of literacy in our society;  
encouraging professional growth among educators by  
connecting them to best practices in the classroom;  
and providing leadership in the field of literacy.

*Membership in Will County Reading Council  
includes membership in Illinois Reading  
Council.*

*Benefits of membership in Will County  
Reading Council include:*

- *Professional Development opportunities*
- *The Award-winning Illinois Reading Council Journal — 4 issues per year*
- *Networking with other Reading Professionals*
- *Advocacy of current research and information about reading*
- *Scholarships, Grants & Awards*
- *Innovative & Inspiring Professional Conferences*

**Visit [www.illinoisreadingcouncil.org](http://www.illinoisreadingcouncil.org) to join.**

