

# eastern

EASTERN ILLINOIS UNIVERSITY | charleston, illinois

## Position Announcement

Dr. Blair Lord, Provost  
and Vice President of  
Academic Affairs



College of Education and Professional Studies  
Early Childhood Elementary, and Middle Level Education Department  
One Elementary Level tenure track position is available.

**Responsibilities:** The successful candidate will: Teach undergraduate and graduate courses; supervise practicum students; mentor undergraduate and graduate students; integrate multicultural education and technology tools; collaborate with public school teachers and administrators; teach in satellite programs; participate in research/creative activities; as well as provide leadership and service to the Department/College/University, profession and community. Teaching responsibilities will include General Methods and Curriculum in Elementary Education and Reading/Language Arts.

The successful candidate will be committed to the Departmental Mission of creating teachers who are prepared to meet the challenges faced by professional educators in a rapidly changing society.

**Qualifications:** Doctorate or ABD in Elementary Education or a related area such as Curriculum and Instruction and a minimum of three years of elementary level teaching experience some of which are in U.S. schools. Teaching experience at the college/university level and in the supervision of pre-service teachers in field placements is preferred. Preferred qualifications include elementary grades specialization in the areas of Reading/Language Arts and/or additional content areas.

**Starting Date:** August 2012

**Applications:** All items should be sent electronically: Letter of application, Current Vita, Unofficial Transcripts and List of three references with telephone numbers and e-mail addresses to:

Dr. Joy L. Russell, Chair  
Department of Early Childhood,  
Elementary, and Middle Level Education  
Eastern Illinois University  
jlrussell@eiu.edu

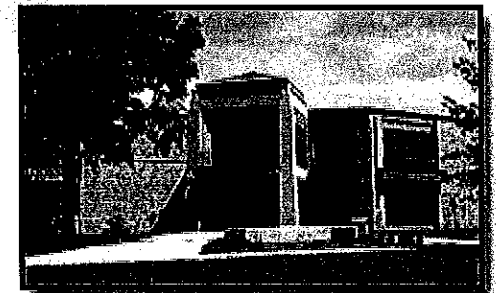
Credential review begins immediately. The position is open until campus interviews are scheduled.

**Web Site:** <http://www.eiu.edu/~eemedu>

Eastern Illinois University is an equal opportunity, equal access, affirmative action employer committed to achieving a diverse community.

Counseling and Student Development | Early Childhood, Elementary, & Middle-Level Education  
| Educational Administration | Health Studies | Physical Education | Recreation Administration |  
Secondary Education & Foundations | Special Education | Student Teaching

**Dr. Diane Jackman**  
Dean, College of Education  
and Professional Studies



Buzzard Hall

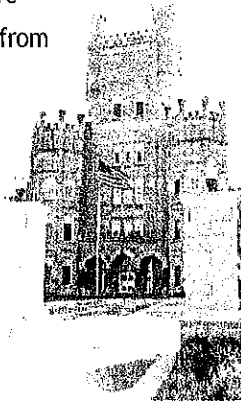
[www.eiu.edu](http://www.eiu.edu)

**“At Eastern Illinois University, each member of the faculty and staff play an important role in our aim to be the best in the nation at the integrated academic and personal development of our students.”**

*- Dr. William Perry, President*

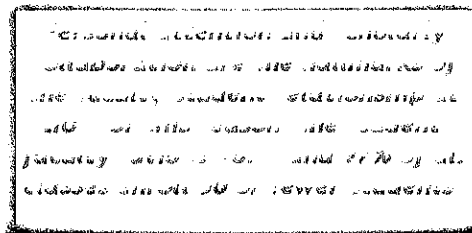


EIU is home to more than 11,000 students from Illinois, the U.S., and over 40 other nations. It offers 47 undergraduate and 27 graduate degree programs in the arts, humanities, professions, and sciences.



Coupled with more than 200 concentrations and minors, these programs provide students and their faculty opportunities to individualize their curricula and to concentrate in specialty areas.

Established as a “normal” school, EIU admitted its first class in 1899. Over the years, its mission and its physical campus have expanded, but it continues to honor the democratic values on which it was founded. These values have resulted in a system of shared governance; in programs that recognize and reward faculty, staff, and student achievements; in salaries comparable to those at peer institutions; in continued efforts to increase diversity; and as graduates will tell you, in opportunities and relationships that change lives.



University-wide learning goals ensure that EIU students communicate competently, think critically, and take seriously their responsibilities as global citizens. Undergraduates must complete courses in foreign language and cultural diversity, as well as a capstone seminar that requires them to synthesize and reflect on what they’ve learned. In addition to its thriving honors program and first-choice graduate programs, Eastern promotes study abroad and student scholarship, as well as both integrative and service learning. Our expectations for students are reflected in the faculty’s tri-part mission to teach, research/create, and serve.

Eastern’s retention and graduation rates are 79% and 62%, respectively, and thus among the highest in the state and nation. Compared to peer institutions, Eastern has the largest percentage of students enrolled in study abroad programs. According to a

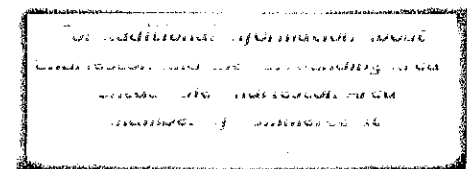
recent National Science Foundation survey, EIU prepares more undergraduates who go on to earn doctoral degrees than any other master’s college/university in Illinois. In addition to ranking first in the state, EIU ranks in the top 5% nationwide. And for the ninth consecutive year, Eastern was named one of the top Midwestern public universities in its class by the U. S. News and World Report, which analyzes schools’ academic reputations, student selectivity, faculty resources, graduation and retention rates, financial resources, and alumni giving.

Yet while Eastern’s credentials are solid, its goal is to become best in the nation at integrating the academic and personal development of its students. Such a university deliberately bridges learning that occurs in, among, and outside its classrooms so that students transfer knowledge and skills from one venue to another, and in doing so, deepen their understanding and retain what they learn.

EIU offers unlimited opportunities for constituents to expand their horizons via concerts, exhibitions, plays, lectures, presentations, social gatherings, and recreational and sporting events on a beautiful, accessible,

and safe campus. It also maintains a positive relationship with the Charleston community, which provides retail amenities within walking distance of the campus; a strong public school system which complements academics with fine arts and physical education programs; and a variety of social, civic, and religious organizations. The area encompasses a number of regional hospitals that provide a full range of services. Eastern is within three hours of Chicago, St. Louis, and Indianapolis, and within easy driving distance of Champaign-Urbana and Willard Airport. Amtrak service is available in Mattoon.

Because Eastern’s long history is rich in enduring traditions and values, including the responsibility to retain the trust of those it serves and employs.



**eastern illinois university**  
charleston, illinois | [www.eiu.edu](http://www.eiu.edu)

Office of Civil Rights and Diversity